

# QUARTERLY NEWSLETTER

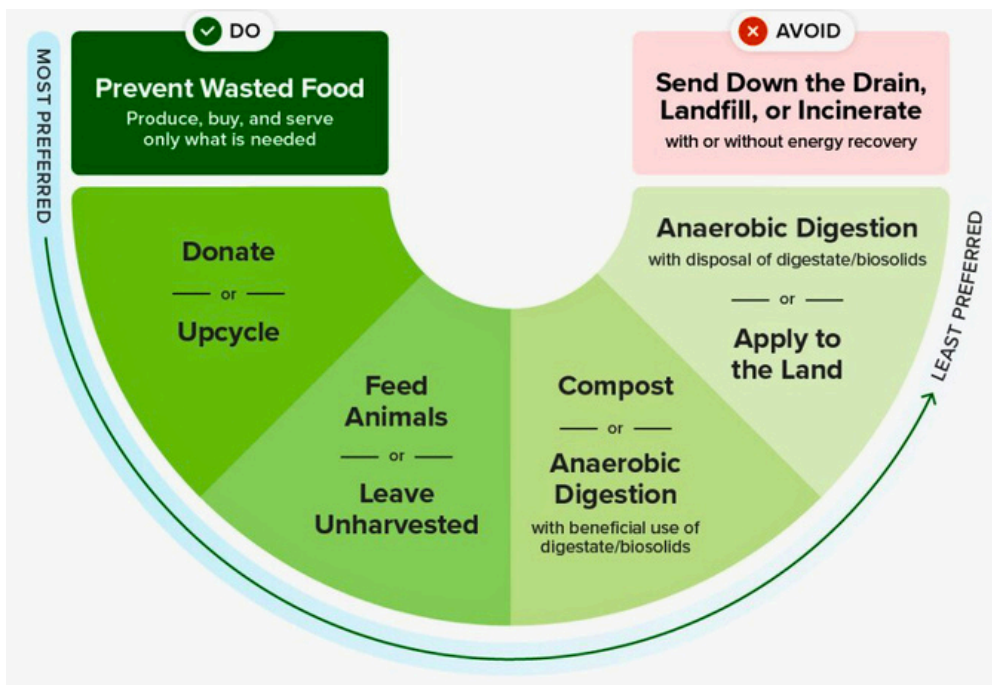
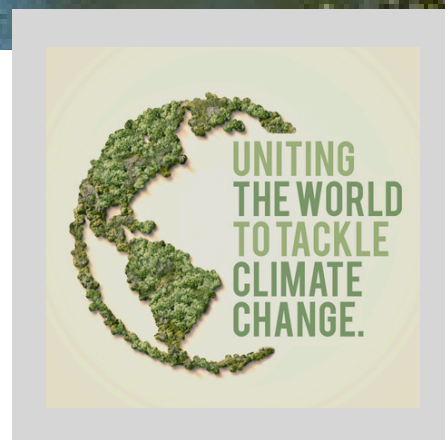
MARCH 2024 | VOLUME 01

www.msclimateandtheequity.com



## Our Mission

To strengthen and empower Mississippi's health professionals' voice by communicating climate health impacts, advocating for equitable climate solutions to the public, health professionals, and policymakers.



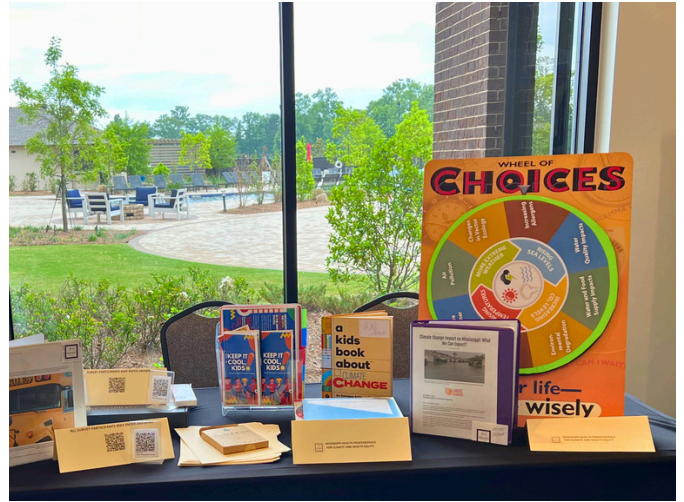
## March is National Nutrition Month®!

EPA developed the Wasted Food Scale based on the findings of its 2023 report From Field to Bin: The Environmental Impacts of U.S. Food Waste Management Pathways.

# 2024 EMPOWERING HEALTH CONFERENCE



Mr. Kenneth Smith  
MS Medical & Surgical Association  
MS Black Professionals  
Annual Conference Exhibit



MSDH Empowering Healthy  
Communities Conference

## JSU RESEARCH WEEK

The Jackson State University Research Engagement Week is an opportunity for faculty, staff, and students to share their research on issues, solutions, and policies that impact our society.

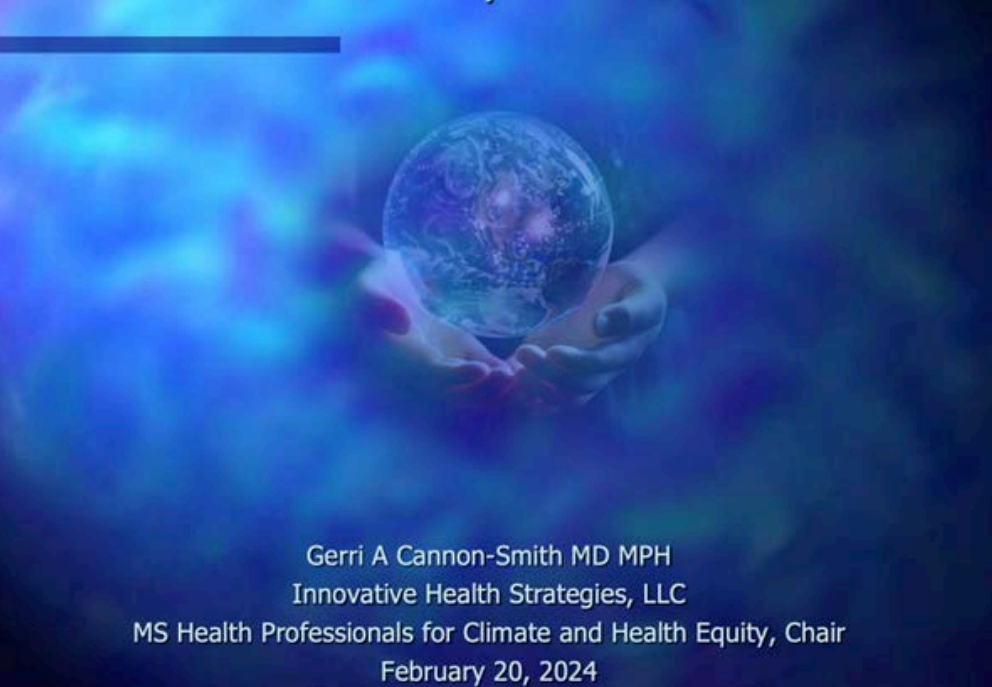


## IGNITE PASSION FOR CLIMATE ACTION: YOUTH SUMMER CAMP

Art therapist, Susan Anand ATR-BC, ATCS, LPAT, Local Artist Dr. Mini Li, and Dr. Gerri Cannon-Smith were thrilled to ignite passion and empower the next generation. The 3-D Reduce, Reuse, Recycle activity focuses on the intersection of health, equity, and climate change, offering a transformative experience for young minds at the Mississippi Museum of Art Summer Camp.



### A Pediatric Perspective on Climate Change AAP-MS Chapter Chat



Dr. Gerri Cannon-Smith has over thirty years' experience as a Pediatrician, PH practitioner, administrator, and public health faculty. Her career has centered on the care of underserved populations, health literacy, and health equity, especially as related to drivers of chronic conditions in children.

**"I am because we are."  
— Ubuntu**



Dr. Denise Powell and Gerri Cannon-Smith participated Equitable Action Run Towards Health (EARTH) is a running event in Gloster, MS focused on environmental justice, political representation, and communal time in nature.



The Impact of Climate Change and Mental Health presented by Venise Curry, MD at the Mississippi Trauma Informed Care Conference.



Fat to Fit Olympics took place at Tougaloo College in collaboration with Fayette Community Service Organization, where MSHPCHE donated a "Clean Energy" bicycle.

**DR. APRIL M. JONES**  
**Manager, Disaster Risk Reduction**

April M. Jones, PhD, with 20 years of experience in government and non-profit sectors, manages the Red Cross Community Adaptation Program in Yazoo County. She holds degrees in Agriculture Economics, Criminal Justice, and Public Policy, and is involved in community support through the Pickens Volunteer Committee.

**MSHPCHE  
MEMBER  
SPOTLIGHT**

# CLIMATE CHANGE AND CHILDREN'S HEALTH AND WELL-BEING IN THE UNITED STATES



**This report** was developed by EPA's Office of Atmospheric Protection (OAP) and contains modeling contributions from Federal agency analysts, academic experts. Support for the report's production was provided by Industrial Economics, Inc.

**HEALTH AND  
CLIMATE CHANGE:  
THE IMPERATIVE  
FOR A HEALTH-  
CENTRED  
RESPONSE IN A  
WORLD FACING  
IRREVERSIBLE  
HARMS**



**The Lancet Countdown** is an international research collaboration that independently monitors the evolving impacts of climate change on health, and the emerging health opportunities of climate action. In its eighth iteration, this 2023 report draws on the expertise of 114 scientists and health practitioners from 52 research institutions and UN agencies worldwide to provide its most comprehensive assessment yet.

## CLIMATE CHANGE SURVEYS

This MSHPCHE survey is designed to assess baseline climate health knowledge, perceptions, and needs of the healthcare community of providers.

[www.surveymonkey.com/r/HealthProfessional](http://www.surveymonkey.com/r/HealthProfessional)



This MSHPCHE survey is designed to assess current climate health knowledge, perceptions, and needs of the community.

[www.surveymonkey.com/r/MSHPCHE-CommunitySurvey](http://www.surveymonkey.com/r/MSHPCHE-CommunitySurvey)



## GET INVOLVED

EDUCATION | ADVOCACY | RESEARCH | COMMUNITY  
ENGAGEMENT | COMMUNICATIONS & MEDIA

Your support is vital to our work at MSPHCHE. There are many ways you can contribute towards our activities, and every little bit that you commit goes a long way in helping us fulfill our mission. Learn more about how you can get involved by exploring our website [www.msclimateandhealthequity.com](http://www.msclimateandhealthequity.com)

## STAY TUNED

**March 22**

World Water Day

**April 22**

Earth Day



**Questions? Contact [mshpche@gmail.com](mailto:mshpche@gmail.com)**

# MONTHLY NEWSLETTER

MARCH 2024 | VOLUME 01



## Our Mission

To strengthen and empower Mississippi's health professionals' voice by communicating climate health impacts, advocating for equitable climate solutions to the public, health professionals, and policymakers.



## Seasonal Tips

Lorem ipsum dolor sit amet, consectetur adipiscing elit. Nunc enim arcu, mollis ut ullamcorper ut, congue sit amet neque. In nec congue ex, et fermentum elit. Pellentesque aliquam, purus quis cursus mattis, massa nulla pretium risus, non vestibulum orci ex sed purus.